

## APPENDIX 3

TPO 2/17

## **Town and Country Planning Act 1990**

### **The Maldon District Council Tree Preservation Order 2/17**

**Title: Land rear of 24 to 54 Maldon Road and south of Green Lane, Burnham on Crouch**

The Maldon District Council, in exercise of the powers conferred on them by section 198 of the Town and Country Planning Act 1990 make the following Order—

#### **Citation**

1. This Order may be cited as the Maldon district Council TPO 2/17.

#### **Interpretation**

- 2.— (1) In this Order “the authority” means the Maldon District Council.  
(2) In this Order any reference to a numbered section is a reference to the section so numbered in the Town and Country Planning Act 1990 and any reference to a numbered regulation is a reference to the regulation so numbered in the Town and Country Planning (Tree Preservation)(England) Regulations 2012.

#### **Effect**

- 3.— (1) Subject to article 4, this Order takes effect provisionally on the date on which it is made.  
(2) Without prejudice to subsection (7) of section 198 (power to make tree preservation orders) or subsection (1) of section 200 (tree preservation orders: Forestry Commissioners) and, subject to the exceptions in regulation 14, no person shall—
  - (a) cut down, top, lop, uproot, wilfully damage, or wilfully destroy; or
  - (b) cause or permit the cutting down, topping, lopping, uprooting, wilful damage or wilful destruction of,any tree specified in the Schedule to this Order except with the written consent of the authority in accordance with regulations 16 and 17, or of the Secretary of State in accordance with regulation 23, and, where such consent is given subject to conditions, in accordance with those conditions.

#### **Application to trees to be planted pursuant to a condition**

4. In relation to any tree identified in the first column of the Schedule by the letter “C”, being a tree to be planted pursuant to a condition imposed under paragraph (a) of section 197 (planning permission to include appropriate provision for preservation and planting of trees), this Order takes effect as from the time when the tree is planted.

Dated this 2<sup>nd</sup> day of February 2017

Signed on behalf of Maldon District Council:



Fiona Marshall  
Chief Executive  
Authorised by the Council to sign in that behalf.

## SCHEDULE 2/17

### Specification of trees

#### Trees specified individually

(encircled in black on the map)

<i>Reference on map</i>	<i>Description</i>	<i>Situation</i>
NONE		

#### Trees specified by reference to an area

(within a dotted black line on the map)

<i>Reference on map</i>	<i>Description</i>	<i>Situation</i>
A1	Trees (of whatever species) within the area marked A1 on the map	

#### Groups of trees

(within a broken black line on the map)

<i>Reference on map</i>	<i>Description (including number of trees of each species in the group)</i>	<i>Situation</i>
NONE		

#### Woodlands

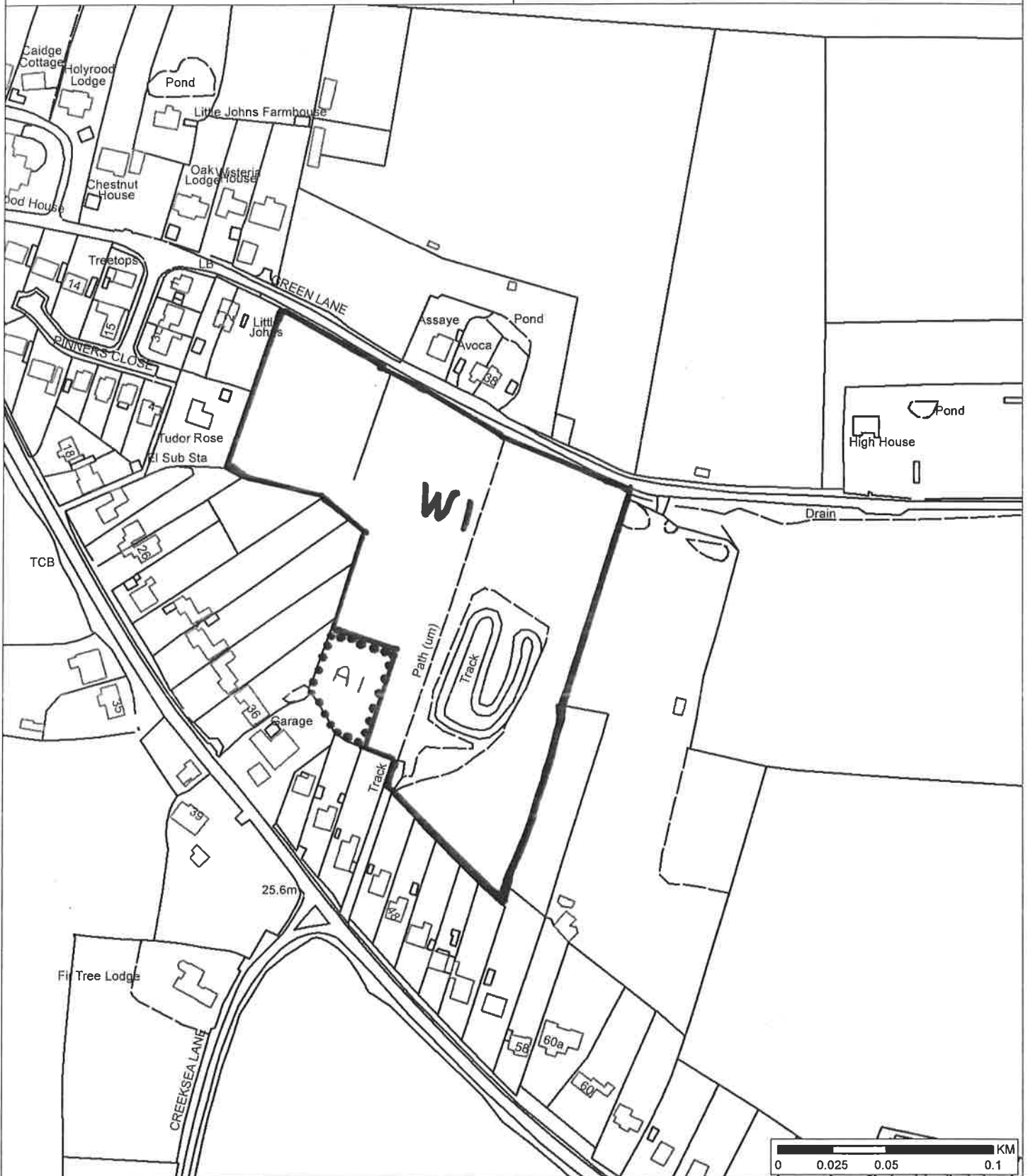
(within a continuous black line on the map)

<i>Reference on map</i>	<i>Description</i>	<i>Situation</i>
W1	Secondary Woodland with mature trees, mainly Broadleaf.	

# Tree Preservation Order

Details

## TPO 2/17 Land rear of 24 to 54 Maldon Road Burnham on Crouch



### Copyright

For reference purposes only.  
No further copies may be made.  
This map is reproduced from Ordnance Survey material with the permission of Ordnance Survey on behalf of the Controller of Her Majesty's Stationery Office © Crown copyright.  
Unauthorised reproduction infringes Crown copyright and may lead to prosecution or civil proceedings.  
Maldon District Council 100018588 2014



[www.maldon.gov.uk](http://www.maldon.gov.uk)

Scale:	1:2,500
Organisation:	Maldon District Council
Department:	Community and Leisure Serv
Comments:	J L Gilbert
Date:	02/02/2017
MSA Number:	100018588